

# SPECIFICATIONS

# REGULATOR

VEHICLE TYPE	ZW5A,ZW5F	PART NUMBER  126000-2700
ENGINE TYPE		
PRODUCTION TERM	1998.02-	

## 1. SPECIFICATION

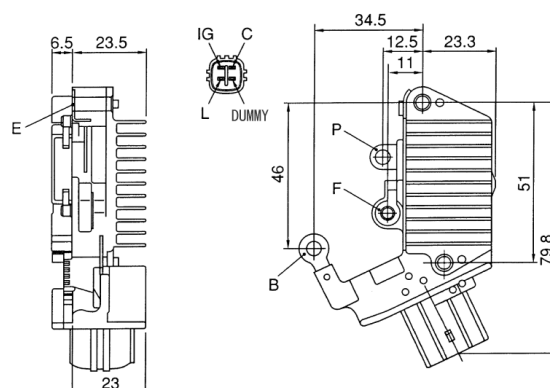
RATED VOLTAGE (V)	12
REGULATING VOLTAGE (V)	Hi: - Lo: 14.0-15.1
(at 5000rpm, load 10 A, 25°C)	
TYPE OF REGULATOR	M1S

## \*FUNCTION

\* WARNING FUNCTION  
 WARNING FUNCTION FOR ROTOR COIL BREAK.  
 WARNING FUNCTION FOR REGULATOR DISCONNECTED  
 WARNING FUNCTION FOR ALTERNATOR B-TERMINAL  
 DISCONNECTED  
 CHARGE LAMP ON.  
 HOLD FUNCTION IS NONE.

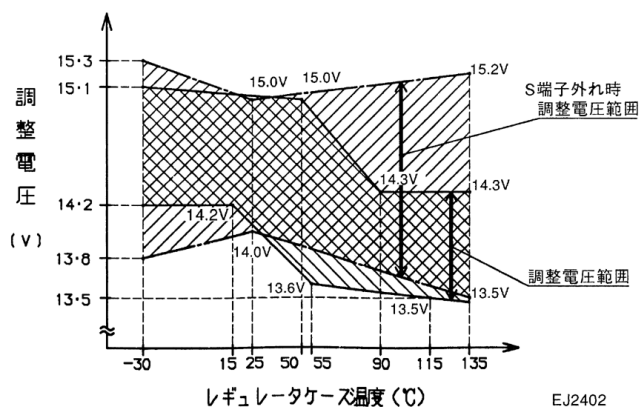
## 2. OUTLINE

PAIR ALTERNATOR (EXAMPLE)  
 101211-1760



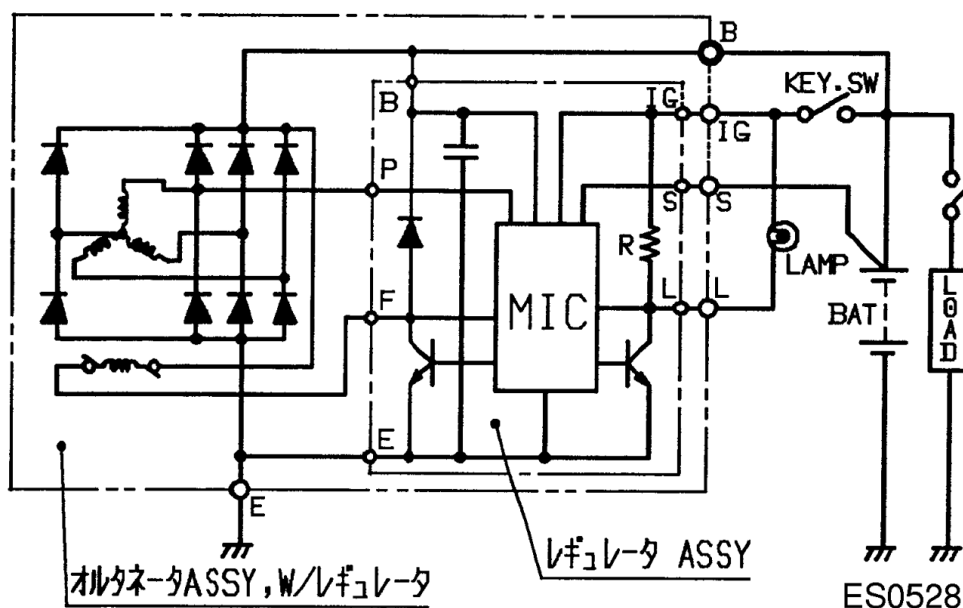
E10395

FIG1. EXTERNAL VIEW OF REGULATOR



EJ2402

FIG2. REGULATOR SETTING VOLTAGE TEMPERATURE CHARACTERISTICS



ES0528

FIG3. CIRCUIT DIAGRAM